



# SWAROVSKI

# LOVE

VALENTINE'S DAY  
INSPIRATIONAL PROJECTS 2020





# SWAROVSKI

## *Bubbles of Love*

Swarovski Crystals

Product Group	Article No.	Amount	Size	Color	Color code
Flat backs	2808	90pc	3.6mm	Crystal Golden Shadow F	001 GSHA
Flat backs	2808	40pc	6mm	Crystal Golden Shadow F	001 GSHA
Flat backs	2808	30pc	10mm	Crystal Golden Shadow F	001 GSHA

### Supplies:

2 – fluted champagne glass

Your choice of glue E6000 or two-part epoxy





# SWAROVSKI

## Instructions:

- STEP 1: Using one champagne flute, glue on (15) Art. 2808 10mm Crystal Golden Shadow flat backs along the rim of the stem evenly spaced.
- STEP 2: Using the same flute as above, glue on (3) Art. 2808 6mm Crystal Golden Shadow flat backs on the rim of the mouth approximately 8mm apart.
- STEP 3: Using the same flute as above, glue on two more rows using (3) Art. 2808 6mm Crystal Golden Shadow flat backs, lining the crystals up directly under the first row from step 2. Repeat once.
- STEP 4: Glue on (5) Art. 2808 3.6mm Crystal Golden Shadow flat backs, vertically below the left bottom 6mm flat back crystal. Repeat this step for the middle and right 6mm flat back crystal.
- STEP 5: For the next row, glue on (1) Art. 2808 3.6mm flat back between the left and middle 6mm flat back. Repeat this step by gluing on (1) Art. 2808 3.6mm flat back between the middle and right 6mm flat back.
- STEP 6: Glue on vertically (5) Art. 2808 3.6mm between the left and right flat back added in step 5.
- STEP 7: Repeat steps 2-6 for the opposite side of the flute.
- STEP 8: Repeat steps 1-7 for each additional glass made.





# SWAROVSKI

## Unlock my Heart

Swarovski Crystals

Product Group	Article No.	Amount	Size	Color	Color Code
Beads	5040	4 pcs	6mm	Scarlet	276
Beads	5000	2 pcs	6mm	Scarlet	276
Beads	5328	4 pcs	4mm	Scarlet	276

### Supplies:

1 pc 24x8mm Key Charm Vintaj® DP110

1 pc 20x11mm Heart Charm Vintaj® DP100

2pr 36x16mm Mythical Reign Drop Vintaj® DP171

1pr Ear wires

4" 2.2x3mm flat oval chain Vintaj® CH104

4pc headpins

2pc eyepins





# SWAROVSKI

## Instructions:

STEP 1: Using (1) headpin, slip one (1) Art. 5040 6mm crystal Scarlet bead. Insert into top most center hole of the earring drop with the crystal on the right side of the earring component. From the back nip the wire to a length of ~8mm. Coil the wire down until it is snug on the wrong side, while keeping the crystal in place.

STEP 2: Cut the chain into 2 equal pieces. Slide the chain ends (from back to front) into the two holes that sit next to each other.

STEP 3: Using (1) eye pin, attach to one charm, slip on (1) Art. 5328 4mm Scarlet bicone and create a simple loop. Before closing the loop attach loop to one open end of chain.

STEP 4: Using (1) head pin, slip on (1) Art. 5000 6mm Scarlet bead, (1) Art. 5040 6mm Scarlet bead, and (1) Art. 5328 4mm Scarlet bicone. Create a simple loop. Before closing the loop attach loop to the remaining open end of the chain.

STEP 5: Attach the ear wire to the top hole of the earring component.

STEP 6: Repeat steps 1-5 for the second side.





# SWAROVSKI

## Love Takes Two

Swarovski Crystals

Product Group	Article No.	Amount	Size	Color	Color Code
Beads	5741	2 pcs	8mm	Crystal	001
Beads	5741	2 pcs	12mm	Crystal	001
Flat backs	2058	2 pcs	SS10	Crystal F	001

### Supplies:

2pc Heart Scroll Bead TierraCast® 94-5672-12

2pc Love Charm TierraCast® 94-2244-12

1 pr earwire

2pc 6mm jump rings

2pc 2" eye pins 2

Alcohol wipes

Swarovski two part epoxy CG500





# SWAROVSKI

## Instructions:

STEP 1: Using the alcohol wipes clean the two love charms and set aside to dry.

STEP 2: Using the two part epoxy glue in one 2058 ss10 Crystal Flatback into the cavity in the Love Charm and set aside to dry. Repeat for second charm.

STEP 3: Using (1) 6mm jump ring, attach it to (1) TierraCast love charm.

STEP 4: Using one eye pin, attach to the 6mm jump ring from step 1. Slip onto the ear wire (1) 12mm Art. 5741 Crystal heart bead, (1) TierraCast heart bead and (1) 8mm Art. 5741 Crystal heart bead. Make a simple loop.

STEP 5: Attach (1) ear wire to the simple loop made in step 2.

STEP 6: Repeat steps 3-5 for second earring.





# SWAROVSKI

## Love in Bloom

Swarovski Crystals

Product Group	Article No.	Amount	Size	Color	Color Code
Crystal Pearls	5810	2 pcs	4mm	Crystal Powder Rose	001-352
Crystal Pearls	5810	16 pcs	3mm	Crystal Powder Rose	001-352
Pendants	6261	2 pcs	17mm	Crystal Antique Pink	001 ANTP

### Supplies:

2pc 20x20mm Moroccan Tile Vintaj® F432

2pc Jump ring

2pc eye pin

1pr ear wire

Beadalon:

24" 24g Antique Brass Artistic Wire®

### Instructions:

STEP 1: Using 12" of wire, wire onto the inside circle (with 8 holes), (8) 5810 3mm Crystal Powder Rose pearls, making sure the wire stays tight. End wire from wrong side, tighten down.

STEP 2: Using (1) jump ring, attach to (1) Art. 6261 17mm Crystal Antique Pink heart pendant.

STEP 3: Attach (1) eye pin to the jump ring made in step 2. Slip on (1) Art. 5810 4mm pearl in Crystal Powder Rose and make a simple loop. Before closing the loop, attach it to a corner hole at the bottom of the filigree. Filigree will be in the shape of a diamond.

STEP 4: Attach (1) ear wire to the opposite end of the filigree from step 3.

STEP 5: Repeat steps 1-4 for second side.







# SWAROVSKI

## Love in Bloom Necklace

Swarovski Crystals

Product Group	Article No.	Amount	Size	Color	Color Code
Crystal Pearls	5810	30 pcs	6mm	Crystal Powdered Rose	001 352
Crystal Pearls	5810	10 pcs	4mm	Crystal Powdered Rose	001 352
Crystal Pearls	5810	6 pcs	3mm	Crystal Powdered Rose	001 352
Pendants	6261	2 pcs	17mm	Crystal Antique Pink	001 ANTP
Beads	5741	1 pc	8mm	Blush Rose	257

### Supplies:

1 49mm Ornate Wreath Filigree Vintaj® F0002

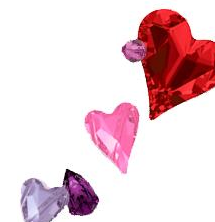
1 love token charm Vintaj® BVCHM045

6 pcs jump ring

1 12mm lobster claw

24" 24g antique brass wire Artistic Wire®

36" 20g antique brass wire Artistic Wire®





# SWAROVSKI

## Instructions:

STEP 1: Using 20g wire, create two chains of linked simple loops using 15pc of Art. 5810 6mm pearls in Crystal Powdered Rose for each chain. Set aside.

STEP 2: Using 24g wire, from the center bottom of filigree begin wiring on (2) Art. 5810 4mm pearl in Crystal Powdered Rose and (2) Art. 5810 3mm pearl in Crystal Powdered Rose. Repeat twice more. End with (2) Art. 5810 4mm pearl in Crystal Powdered Rose. NOTE: please check photo for pearl placement on filigree piece.

STEP 3: Attach (1) jump ring to (1) Art. 6261 17mm Devoted 2 You heart. Repeat once.

STEP 4: Using (1) eye pin, attach to the component made in step 3. Slip on (1) Art. 5810 4mm pearl in Crystal Powdered Rose and turn a simple loop to close. Repeat once more.

STEP 5: Using (1) eye pin, open loop and attach it to the loop on the love token charm. Slip on (1) Art. 5741 8mm Blush Rose heart bead close loop.

STEP 6: Using components from step 1, attach (1) jump ring to each end of the chains. Attach each chain component to the round filigree. NOTE: see picture for correct placement.

STEP 7: Using the components made in steps 4 and 5. Open the top loops of each and attach to the round filigree. NOTE: see picture for correct placement (crystal hearts on the outside/love charm in the middle).





# SWAROVSKI

## Love Train

Swarovski Crystals

Product Group	Article No.	Amount	Size	Color	Color Code
Fancy Stones	4320	2 pcs	14x10mm	Crystal Royal Red Delight	001-L107D
Fancy Settings	4320/J	2 pcs	14x10mm	Rhodium plate	3PITCH

### Supplies:

2pc Amor Pendant TierraCast® 94-2501-40

6 large oval jump rings

1 pr ear wires

Alcohol wipes

Swarovski two part epoxy CG500

### Instructions:

STEP 1: Using the alcohol wipes clean the two metal settings and set aside to dry.

STEP 2: Glue in (1) Art. 4320 14x10 Crystal Royal Red Delight into (1) Art. 4320/J 14x10 Rhodium teardrop setting with top loop. Repeat for second side.

STEP 3: Using metal hole punch, make a hole at the point of the Amor Pendant. Repeat for second side.

STEP 4: Attach component made in step 1 using (1) jump ring to the bottom hole of the Amor Pendant. Repeat for second side.

STEP 5: Attach (2) jump rings to the top hole of the Amor Pendant. Repeat for second side.

STEP 6: Attach (1) ear wire to the top jump ring from step 4. Repeat for the second side.





# SWAROVSKI

## *Love Train Lariat Necklace*

Swarovski Crystals

Product Group	Article No.	Amount	Size	Color	Color Code
Fancy Stones	4327	1 pc	30x20mm	Crystal Royal Red Delight	001-L107D
Fancy Stones	4320	5 pcs	14x10mm	Crystal Royal Red Delight	001-L107D
Fancy Settings	4327/J	1 pc	30x20mm	Rhodium plate	3PITCH
Fancy Settings	4320/J	5 pcs	14x10mm	Rhodium plate	3PITCH

### Supplies:

#### TierraCast:

5pc Amor charm TierraCast® 94-2499-40

1pc Amor pendant TierraCast® 94-2501-40

44" linked chain TierraCast® 20-0625-12

1pc large Flora Ring TierraCast® 94-3200-40

1pc medium Flora Ring TierraCast® 94-3199-40

Alcohol wipes

Swarovski two part epoxy CG500





# SWAROVSKI

## Instructions:

STEP 1: Using the alcohol wipes clean the two metal settings and set aside to dry.

STEP 2: Glue (1) Art. 4327 30x20mm Crystal Royal Red Delight onto (1) Art. 4327/J 30x20mm rhodium plated setting. Set aside.

STEP 2: Glue (1) Art. 4320 14x10mm Crystal Royal Red Delight onto (1) Art. 4320/J 14x10mm rhodium plated setting. Repeat this step 4 more times. Set aside

STEP 3: Remove 12 links from the chain, open links and set aside.

STEP 4: Attach one end chain link from the lariat chain to the large Flora link. Close link.

STEP 5: Attach (1) oval link made in step 3 to the large Flora link, before closing link attach it to the crystal component made in step 1.

STEP 6: Attach (1) chain link made in step 3 to one small Amor pendant. Before closing the link attach it to the second link up from the large Flora link. Repeat this step four times, attaching the link to every other link of the lariat chain.  
Note: please see picture for charm placement.

STEP 7: Using the end chain link on the second side of the lariat chain, attach it to the medium Flora link. Close link.

STEP 8: Attach (1) oval link made in step 3 to the medium Flora link, before closing link attach it to the crystal component made in step 2.





# SWAROVSKI

## *Keeper of Hearts*

Swarovski Crystals

Product Group	Article No.	Amount	Size	Color	Color Code
Pendants	6432	1 pc	14.5mm	Crystal Vitral Light	001VL
Pendants	6432	2 pcs	10.5mm	Crystal Vitral Light	001VL
Pendants	6432	2 pcs	8mm	Crystal Vitral Light	001VL

### Supplies:

18" – 2.5x4.6mm Flat Link Chain

1 – 49x8mm Dotted Skinny Oval - Vintaj® PT177-070

4 small round jump rings

5 medium oval jump rings

1 large oval jump ring

1 lobster closure

6" 20g Artistic Wire®

12" 22g Artistic Wire®

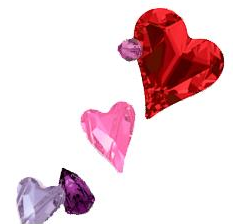




# SWAROVSKI

## Instructions:

- STEP 1: Using the Dotted Skinny Oval and placing it horizontal with the hole on the left, use a metal hole punch to make one hole on the right side similar to the hole already made on the left side. Next make one hole in the center of the skinny oval and then 2 holes on the right equally spaced and 2 holes on the left equally spaced. Set aside.
- STEP 2: Using (1) 14.5mm #6432 Crystal Vitral Light heart; with the 20g wire create a pendant wire wrap. Note: it was easier to bend the 'loop' into a triangle shape rather than round as the thickness of the crystal pendant will not allow the shape to be truly round. I also created an open loop at the top rather than a true wrapped loop. Using the 22g wire create pendant wire wraps with the 10.8mm and 8mm #6432 Crystal Vitral Light hearts using the same method that you used for the 14.5mm heart. Note: all five hearts should be wrapped in the same manner.
- STEP 3: Using the heart components made in step 2. Open the wrapped loop and add: 4 links of chain to the 14.5mm heart and 2 links of chain to the two 10.5mm hearts.
- STEP 4: Attach one medium oval jump ring to each of the five heart components. Then add to the dotted oval in the following pattern: with the oval in a horizontal position, #1 small, #2 medium, #3 large, #4 medium, #5 small.
- STEP 5: Cut the remaining chain into two equal pieces. Attach one small round jump ring to each piece at the ends. Attach the jump ringed ends to the end holes on the skinny oval.
- STEP 6: Attach one small round jump ring to the opposite end of one side of chain and attach the lobster claw to the small jump ring prior to closing. Close ring.
- STEP 7: Attach the last small round jump ring to the second chain at the end and attach the large oval jump ring prior to closing. Make sure all jump rings are securely closed.







# SWAROVSKI

## Love Lifted Me

Swarovski Crystals

Product Group	Article No.	Amount	Size	Color	Color Code
Beads	5741	21 pcs	8mm	Blush Rose	257
Beads	5328	22 pcs	3mm	Lt. Colorado Topaz Shimmer 2x	246 SHIM2

### Supplies:

Will make a 7" bracelet from end to end

10" 0.15 49 strand beading wire

1 12mm lobster clasp

1 5mm jump ring

1 7mm jump ring

1 Spiral Heart Charm TierraCast® 94-2074-12

2 crimp beads

### Instructions:

STEP 1: Attach the 5mm jump ring to the Spiral Heart charm and set aside.

STEP 2: Using the 10" piece of beading wire, crimp on the lobster clasp using (1) crimp bead.

STEP 3: String on in order (1) charm component made in step 1, \*(1) Art. 5328 3mm Lt. Colorado Topaz Shimmer 2x, and (1) Art. 5741 8mm Blush Rose Love Bead\*. Continue stringing from the \* pattern until all beads are strung ending with (1) Art. 5328 3mm Lt. Colorado Topaz Shimmer 2x bicone.

STEP 4: Attach the 7mm jump ring with a crimp bead to close off the bracelet. Make sure the jump ring is closed appropriately.







# SWAROVSKI

## Love is in the Air

Swarovski Crystal

Product Group	Article No.	Amount	Size	Color	Color Code
Beads	5328	40 pcs	6mm	Rosaline	508
Beads	5741	18 pcs	8mm	Crystal	001
Beads	5741	8 pcs	12mm	Crystal	001
Pendants	6240	3 pcs	27mm	Rosaline	508
Pendants	6261	1 pc	36mm	Crystal	001
Pendants	6264	1 pc	28mm	Crystal	001
Flatbacks	2088	180 pcs	SS20	Crystal F	001
Flatbacks	2088	120 pcs	SS20	Light Siam F	227

### Supplies:

2 – Felted Red Hearts – Woolysheepdots.com

3 – Felted White Hearts – Woolysheepdots.com

120" – White Embroidery Thread

1 – Crystal Katana – Crystal Ninja.com

Aleene's Flexible Stretchable Fabric Glue

1 – Needle

12" wooden stick





# SWAROVSKI

## Instructions:

STEP 1: Using the Crystal Katana pick up 2088 SS20 Crystal Flatbacks and decorate the 3 felted white hearts using glue. Set aside to dry.

STEP 2: Using the Crystal Katana pick up 2088 SS20 Light Siam Flatbacks and decorate the 2 felted red hearts using glue. Set aside to dry.

STEP 3: Cut the embroidery thread into one 30" piece and five 18" pieces and set aside.

STEP 4: To create the top of the wall hanging use the 30" piece of thread. Thread onto needle. Make a dbl knot 6" from the end. Then string on one 5741 8mm Love bead, one 5741 12mm love bead, and one 5741 8mm Love bead. Make a dbl knot to secure in place. Move up 1" on thread and make a dbl knot, then string on three 6mm Rosaline bicone beads and make a dbl knot to secure in place. Move up 1" on thread and make a dbl knot, then string on one 5741 8mm Love bead, one 5741 12mm love bead, and one 5741 8mm Love bead. Move up 4" on thread and make a dbl knot. Now reverse the pattern to complete the strand. Attach this strand 1" from either end of the wooden stick by tying a knot.

STEP 5: Using 18" thread strand, thread on needle. String on one Rosaline Wild Heart Pendant. Loop through the pendant and about 1" up tie a dbl knot so it hangs on the end, then string on three 6mm Rosaline bicone beads and make a dbl knot to secure in place. Move up 1" and sew on one crystal/white felted heart made in step 1. Move up 1" on thread and make a dbl knot, then string on three 6mm Rosaline bicone beads and make a dbl knot to secure in place. Set aside.

STEP 6: Using 18" thread strand, thread on needle. String on one Crystal Truly in Love Heart Pendant. Loop through the pendant and about 1" up tie a dbl knot so it hangs on the end, then string on one 5741 8mm Love bead and make a dbl knot to secure in place. Move up 1" and sew on one light siam/red felted heart made in step 1. Move up 1" on thread and make a dbl knot, then string on one 5741 8mm Love bead, one 5741 12mm love bead, and one 5741 8mm Love bead and make a dbl knot to secure in place. Repeat two more times and set aside.

STEP 7: Using 18" thread strand, thread on needle. String on one Rosaline Wild Heart Pendant. Loop through the pendant and about 1" up tie a dbl knot so it hangs on the end, then string on three 6mm Rosaline bicone beads and make a dbl knot to secure in place. Move up 1" on thread and make a dbl knot, then string on three 6mm Rosaline bicone beads and make a dbl knot to secure in place. Move up 1" and sew on one crystal/white felted heart made in step 1. Move up 1" on thread and make a dbl knot, then string on three 6mm Rosaline bicone beads and make a dbl knot to secure in place. Move up 1" on thread and make a dbl knot, then string on three 6mm Rosaline bicone beads and make a dbl knot to secure in place. Set aside.





# SWAROVSKI

STEP 8: Using 18" thread strand, thread on needle. String on one Devoted to You Heart Pendant. Loop through the pendant and about 1" up tie a dbl knot so it hangs on the end, then string on one 5741 8mm Love bead and make a dbl knot to secure in place. Move up 1" and sew on one light siam/red felted heart made in step 1. Move up 1" on thread and make a dbl knot, then string on one 5741 8mm Love bead, one 5741 12mm love bead, and one 5741 8mm Love bead and make a dbl knot to secure in place. Set aside.

STEP 9: Using 18" thread strand, thread on needle. String on one Rosaline Wild Heart Pendant. Loop through the pendant and about 1" up tie a dbl knot so it hangs on the end, then string on one 6mm Rosaline bicone bead and make a dbl knot to secure in place. Move up 1" and sew on one crystal/white felted heart made in step 1. Move up 1" on thread and make a dbl knot, then string on three 6mm Rosaline bicone beads and make a dbl knot to secure in place. Move up 1" on thread and make a dbl knot, then string on three 6mm Rosaline bicone beads and make a dbl knot to secure in place. Move up 1" on thread and make a dbl knot, then string on three 6mm Rosaline bicone beads and make a dbl knot to secure in place. Set aside.

STEP 10: To assemble the wall hanging tie on each of the strands made in Steps 5-9 at random lengths of your choice.

